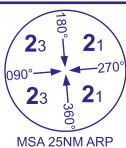
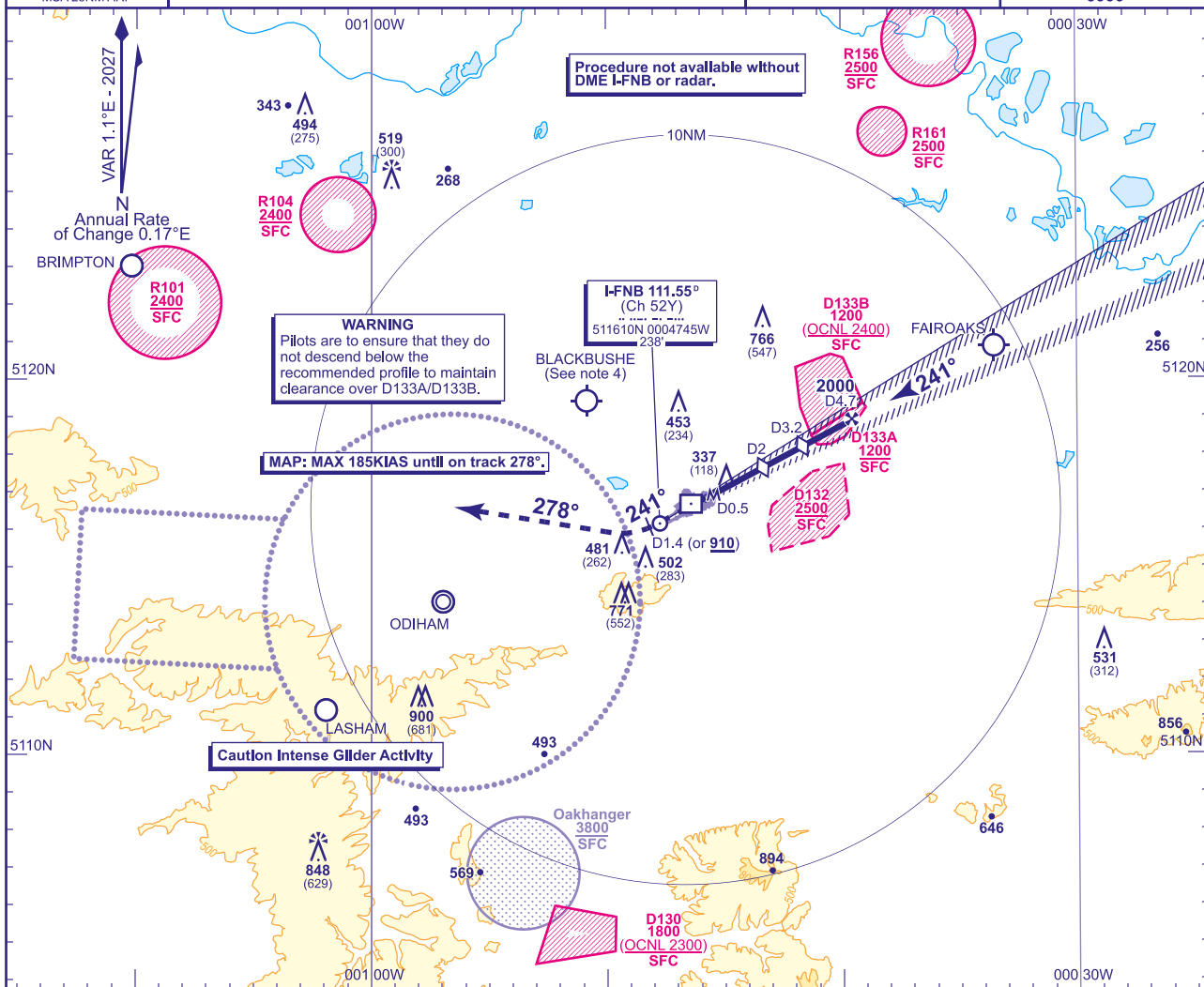


**FARNBOROUGH**  
**LOC/DME Z**  
**RWY 24**  
(ACFT CAT A,B,C,D)



APP 134.355, 125.250	FARNBOROUGH RADAR	AD ELEVATION <b>238</b>
TWR 122.780	FARNBOROUGH TOWER	THR ELEVATION <b>219</b>
RAD 130.055	FARNBOROUGH DIRECTOR	OBSTACLE ELEVATION
ATIS 128.405	FARNBOROUGH INFORMATION	<b>900 AMSL</b> (681) (ABOVE THR)
		BEARINGS ARE MAGNETIC

TRANSITION ALTITUDE  
6000



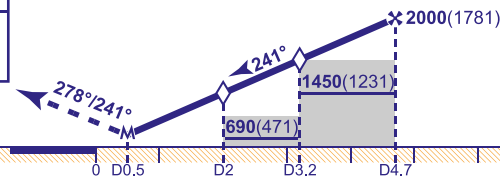
RECOMMENDED PROFILE Gradient 6.1%, 372FT/NM

DME I-FNB	4.0	3.2 (SDF)	3.0	2.0 (SDF)	1.0
ALT(HGT)	1760(1541)	1460(1241)	1390(1171)	1020(801)	650(431)

Initial and intermediate approach as directed by radar.

## MAPt I-FNB DME 0.5

Continuous climb to **3000**. Initially straight ahead to **910** or **I-FNB DME 1.4** outbound, whichever is later, then turn right onto track **278°** then as directed by ATC.



**DME I-FNB zero ranged to THR RWY 24**

Aircraft Category		A	B	C	D	Rate of descent	G/S KT	160	140	120	100	80
OCA (OCH)	Procedure	600(381)	600(381)	600(381)	600(381)		FT/MIN	990	870	740	620	500
VM(C)OCA (OCH AAL)	South of RWY 06/24	880(642)	1020(782)	1170(932)	1170(932)							

<b>NOTE</b>	1 MSA are based on obstacle/terrain clearance. Pilots are to ensure safe navigation to remain clear of active Danger Areas.
	2 SUAAIS available on Farnborough Radar 133.440 when open; other times London Information on 124.600.
	3 CAT B,C and D no circling when EGD132 is active, CAT C and D no circling when EGD133A and EGD133B are active.
	4 Pilots are reminded of the close proximity of Blackbushe aerodrome, 3.8NM north west of Farnborough and to remain clear due to intense GA activity.
	5 See Loss of Communication Procedures in EGLF AD 2.22 Flight Procedures.

**WARNING** Within 0.5NM from touchdown low level turbulence and windshear may be encountered when the wind is 190°-240° at 15KT or more.

**CHANGE (1/26):** MAG INFO REVISED. MAG HEADINGS. RESTRICTED AREA EGR161 ADDED.